



Notice of a public meeting of

Corporate Parenting Board

To: Councillors Rawlings (Chair), Cuthbertson (Vice-Chair), S Barnes, Brooks, Runciman and Funnell

Date: Monday, 26 June 2017

Time: 5.00 pm

Venue: The King Richard III Room (GO49) - West Offices

AGENDA

1. **Declarations of Interest**

At this point, Members are asked to declare:

- any personal interests not included on the Register of Interests,
- any prejudicial interests or
- any disclosable pecuniary interests

which they may have in respect of business on this agenda.

2. **Minutes** (Pages 1 - 4)

To approve and sign the minutes of the meeting held on 10 April 2017.

3. **Public Participation**

At this point in the meeting members of the public who have registered to speak regarding an item on the agenda or an issue within the Board's remit can do so. The deadline for registering is 5pm on Friday 23 June.

Filming or Recording Meetings

Residents are welcome to photograph, film or record Councillors and Officers at all meetings open to the press and public. This includes the use of social media reporting, i.e. tweeting. Anyone wishing to film, record or take photos at any public meeting

should contact the Democracy Officer (whose contact details are at the foot of this agenda) in advance of the meeting.

The Council's protocol on Webcasting, Filming & Recording of Meetings ensures that these practices are carried out in a manner both respectful to the conduct of the meeting and all those present. It can be viewed at

https://www.york.gov.uk/downloads/file/11406/protocol_for_webcasting_filming_and_recording_of_council_meetings_20160809

4. Strategic Theme: Emotional Wellbeing & Mental Health; Wellbeing; Relationships & Identity

Emotional Wellbeing and Mental Health of Children and Young People in Care, on the edge of Care and Care Leavers (Pages 5 - 12)

The report is to inform Members about the activity of the Sub Group for Emotional/Mental Health of Children Looked After, Care Leavers and Edge of Care which reports to the Emotional and Mental Health Strategic Partnership.

Any Board Member whose area of interest relates to the issues raised in this report will have the opportunity to give an update under this item.

5. Corporate Parenting Board Work Plan 2017-18 (Pages 13 - 14)
To consider the Board's proposed work plan for 2017-18 and to receive any updates Members may wish to give on their agreed areas of interest relating to the work of the Board.

6. Urgent Business

Any other business which the Chair considers urgent under the Local Government Act 1972.

Board Members Agreed Areas of Interest

- Show Me That I Matter - Councillor Rawlings
- Housing and Pathway Team - Councillor Stuart Barnes
- Education/Schools - Councillor Brooks
- Health - Councillor Runciman
- Placement Team, Fostering Service and Short Breaks – Councillor Cuthbertson
- Virtual Head and School for Children in Care – Councillor Brooks
- Connexions / Education, Training & Employment - Councillor Funnell

Democracy Officers

Name: Catherine Clarke and Louise Cook (job-share)

Telephone: (01904) 551031

Email: catherine.clarke@york.gov.uk and louise.cook@york.gov.uk

For more information about any of the following please contact the Democratic Services Officers responsible for servicing this meeting:

- Registering to speak
- Business of the meeting
- Any special arrangements
- Copies of reports and
- For receiving reports in other formats

Contact details are set out above.

This information can be provided in your own language.

我們也用您們的語言提供這個信息 (Cantonese)

এই তথ্য আপনার নিজের ভাষায় দেয়া যেতে পারে। (Bengali)

Ta informacja może być dostarczona w twoim własnym języku. (Polish)

Bu bilgiyi kendi dilinizde almanız mümkündür. (Turkish)

یہ معلومات آپ کی اپنی زبان (بولی) میں بھی مہیا کی جاسکتی ہیں۔ (Urdu)

 (01904) 551550

This page is intentionally left blank

City of York Council

Committee Minutes

Meeting	Corporate Parenting Board
Date	10 April 2017
Present	Councillors Cuthbertson (Vice-Chair), S Barnes, Brooks and Runciman
Apologies	Councillors Rawlings and Gunnell

37. Declarations of Interest

At this point in the meeting Members were asked to declare any personal or prejudicial interests they might have in relation to the business on the agenda or any other general interests they might have within the remit of the Board. None were declared.

38. Minutes

Resolved: That the minutes of the last meeting of the Corporate Parenting Board held on 13 February 2017 be approved and then signed by the Chair as a correct record.

39. Public Participation

It was reported that there had been no registrations to speak under the council's Public Participation Scheme.

40. Strategic Theme: Education - 2015-16 Annual Report of the Virtual School

The Board considered a report that informed them of the activities of the Virtual School Head teacher, the Virtual School and the 2015/16 educational outcomes of York's children and young people in care.

The Assistant Director of Education and Skills gave an update and highlighted the contents of the 2015/16 Annual Report of the Virtual School. She made reference to the:

- role of the virtual school
- schools roll and characteristics
- educational outcomes for York's Looked After Children
- excellent school attendance figures

- interventions in place to improve outcomes for Looked After Children.

The Board discussed the attainment gaps between York's Looked After Children and the national and the national Children in Care data. Officers confirmed that with such a small cohort of children in care the data was currently statistically insignificant and that a new benchmarking tool, due to go live in the Autumn, would have the capacity to isolate data to look at variables and benchmark each individual Looked After Child's progress from their starting point.

Members noted that a focus on improving teaching and learning in maths, reading and writing would continue and that the Virtual School would continually support and advise the School Effectiveness and Achievement Advisers and Head teachers about the outcomes for York's children in care.

Following comments and questions from the Board, officers were requested to thank the Virtual Head teacher for her comprehensive report that gave a logistic view and they agreed that the excellent attendance figures would enhance a child's learning to maximise their progression.

- Resolved: (i) That the contents of the annual report be noted and commented on to aid the development of the 2016-17 annual report.
- (ii) That an update report be received in the Autumn

Reason: To keep Board Members updated on the Virtual School and the 2015/16 educational outcomes of York's children and young people in care.

41. Update on implementation of Local Area Teams - their role in supporting vulnerable children

Members considered a report that updated them on the implementation of Local Area Teams (LATs) following their launch in January 2017.

The Head of Early Help and Local Area Teams gave an update and highlighted the background to the service, including the key elements and confirmed LAT's were a multi agency that brought

together a range of partners and pre-existing services in local areas to form a new set of preventive arrangements for families from pregnancy through to adult hood.

The Board noted that by tackling issues as they emerged there was a significant chance of preventing long term poor outcomes and the need for more specialised and high cost services at a later stage.

Following questions from the Board officers confirmed:

- the LAT's were communicating with a variety of partners to raise service awareness and develop partnership working.
- they would brief all Ward Councillors to ensure they were aware of and fully understood the service.
- they would use performance indicators to measure the objectives.
- they would verify if a translator would be present at the parenting course for parents of toddlers.¹

The Board thanked officers for their work and noted the supportive feedback they had already received from schools. They welcomed an update at a future Board meeting.

Resolved: That the report be noted and an update be received at a future Corporate Parenting Board meeting.

Reason: To keep Members updated on implementation of Local Area Teams.

Action Required

<1> Verify if a translator would be present at the parenting course for parents of toddlers. <1> NM

42. Corporate Parenting Board Work Plan 2016-17 and 2017-18

Members considered the Boards work plan for the 2016/17 and 2017/18 municipal year.

Following discussions it was agreed:

- Resolved:
- (i) That the work plan be noted.
 - (ii) That the relevant Members be briefed by officers before their visits to Wenlock Terrace

- and The Glen and then updates be received at future Corporate Parenting Board meetings.
- (iii) That SMTIM be invited to present their Annual report to the Corporate Parenting Board.
 - (iv) That Staying Put be invited to present an update to the Corporate Parenting Board.
 - (v) That the next Virtual School annual report be considered at the November Corporate Parenting Board.

Reason: To keep the Board's work plan updated.

Cllr Cuthbertson, Chair

[The meeting started at 5.00 pm and finished at 6.10 pm].



Corporate Parenting Board

26 June 2017

Report of the Corporate Director of Children, Education and Communities

Emotional Wellbeing and Mental Health of Children and Young People in Care, on the Edge of Care and Care Leavers**Summary**

1. National estimates suggest that one in ten children need support/treatment for mental health problems such as short spells of depression or anxiety through to more severe and persistent issues. Mental health problems in young people can result in lower educational attainment and involvement in behaviours that pose a risk, such as smoking, drug and alcohol abuse and risky sexual behaviour. We know that fear of stigma is a key issue for children and young people who need additional help to support their good mental wellbeing. Our children in care tell us that they want their lives, above all, to be 'normal'. This was a key feature of our consultation with them.¹
2. A survey of key stakeholders across the children's trust community of providers was undertaken in 2015 to review the strategic priorities for the City and to inform the strategic partnership arrangements.² The responses to this survey informed our current partnership arrangements; the Emotional and Mental Health Strategic partnership. The response also clearly identified strong multi agency support for a Children's Looked After work strand. This is embodied within the Emotional and Mental Health Sub Group- Children in Care, on the Edge of Care and Care Leavers.
3. The Children in Care Strategic Partnership also has an interest and role in supporting and challenging practice and services which support the emotional wellbeing and mental health of our children in care, edge of care and care leavers. This partnership has identified a need for clarity around Strengths and Difficulties Questionnaire effectiveness and use with our children and young people in care.

¹ pg 11 C&YPiC York's Strategy 2016 - 2020

² Improving the Emotional and Mental Health of Children and Young People in York

4. The Strengths and Difficulties Questionnaire (SDQ) is a brief behavioural screening questionnaire. The SDQ ask about 25 attributes, some positive and others negative. These 25 items are divided between 5 scales: ³

- | | |
|---|--|
| 1) emotional symptoms (5 items) | } 1) to 4) added together to generate a total difficulties score (based on 20 items) |
| 2) conduct problems (5 items) | |
| 3) hyperactivity/inattention (5 items) | |
| 4) peer relationship problems (5 items) | |

The questionnaire is scored, if necessary support offered and undertaken each year in order to monitor change.

Background

Ofsted Inspection

8. In November and December 2016 Ofsted carried out an extensive inspection of services for children in need of help and protection, children in care, and care leavers. The overall judgement was “Good” and reflected that York has a strong base from which we continue to build upon work with children and young people.
9. The report contained a specific recommendation relevant to emotional wellbeing, mental health and support.

“Ensure that care leavers are supported to understand their health histories and that they and professionals are clear about the pathways to access support for their emotional and mental health needs.”

10. The body of the report highlighted the below regarding pathways to access services.

“There is a wide range of provision available for the emotional health support of children looked after. Specialist psychological support is used to support individual children as required, although pathways to access services are unclear.”

“..Care leavers spoken to by inspectors were unclear about how to access support for their emotional and mental health needs, and described

³ <http://www.sdqinfo.com/a0.html>

loneliness and isolation as having the biggest impact on their emotional well-being.”

U Matter Survey - Section 6: Health and Happiness

11. When asked about their Health Assessment, 85% said they knew what it was while 15% said that they did not. The most positive response from this survey was in answer to the question “If you didn’t feel happy, is there someone you would be able to talk to?” where 97% of children and young people who answered said yes and only 3% said no. They were also asked if they knew where to get information, advice and support and 93% said that they did. One 14 year old young person commented, “I don’t really tell anyone how I feel, but I know who to talk to if needed.” When invited to provide any additional information two young people commented on either lack of knowledge about how to access CAMHS provision or unhappiness with the CAMHS provision they had received.

Analysis

12. The work of the Emotional and Mental Health Sub Group - Children in Care, on the Edge of Care and Care Leavers multi agency priority work stream is intended to ensure that:

More young people who are looked after, or on the verge of being looked after, with emotional and /or mental health problems will recover. More children and young people who have emotional and /or mental health problems will have a positive experience of care and support offered to them.

13. It is chaired by Sophie Keeble, Group Manager Achieving Permanence and Gwynne Rayns, Group Manager Safeguarding Interventions.

This sub group will:

- Map available service provision against tiers of need.
- Undertake a literature review which is focused on improving our knowledge of the evidence of effectiveness of mental health interventions for children and young people. This will be undertaken by students from University of York
- Inform this work by using the views of children in care through SMTIM.
- The initial outcomes will be shared in the Emotional and Mental Health Strategic Partnership meeting in August

14. The work of the SDQ Sub Group multi-agency priority work stream is intended to

Determine the value and limitations of SDQs for York's children and young people in care.

It is chaired by Sophie Keeble, Group Manager Achieving Permanence, and will

- Review York's use of SDQ and evidence of effectiveness
- Undertake a literature search around evidence for effectiveness
- Identify other LA practice
- The outcomes will be shared in the Child in Care Strategic Partnership meeting in Autumn 2017.

15. The outcomes of the two work streams will be considered together to inform the approach to supporting children in care, on the edge of care and care leavers emotional and mental health moving forward .

Council Plan

16. The development of these work streams and outcomes directly relates to

- a) the Council Plan 2015-19 priorities 'A focus on frontline services' - to ensure all residents, particularly the least advantaged, can access reliable services and community facilities.
- b) the Children and Young People's Plan 2016-20 which highlights Emotional and Mental Health as one of its three priorities
- c) the Children and Young People in Care Plan 2016-2020 which has an overarching strategic theme Emotional well being and mental health.

Implications

17. **Financial**

No financial implications have been identified at this stage.

Human Resources (HR)

There are no HR implications to consider at this stage

Equalities

There are no equalities implications to consider at this stage

Legal

There are no equalities implications to consider at this stage

Crime and Disorder

There are no crime and disorder implications to consider at this stage

Information Technology (IT)

There are no IT implications to consider at this stage

Property

There are no property implications to consider at this stage

Risk Management

18. There are no risks to consider at this stage.

Recommendations

19. Members of the Corporate Parenting Board are asked to consider the report.

20. Reason: To keep Members updated on the progress and for members to clarify any issues arising

Author:

Sophie Keeble
Group Manager,
Achieving Permanence
01904 555322

Chief Officer Responsible for the report:

Jon Stonehouse
Corporate Director of Children, Education and
Communities

Report Approved by
Eoin Rush Assistant
Director



Date 16.06.17

Specialist Implications Officer(s) None

All

Wards Affected:

For further information please contact the author of the report

Background Papers

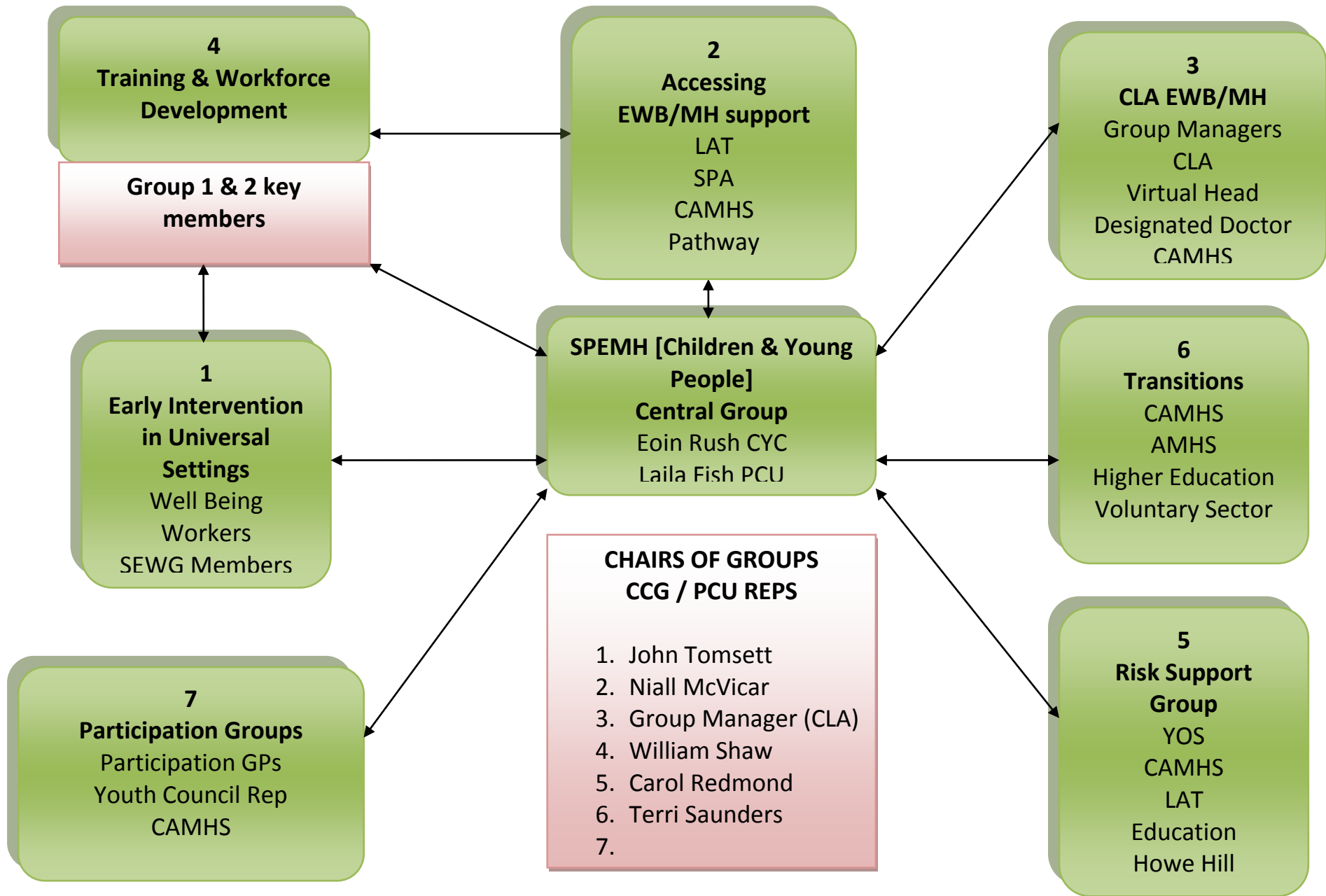
None

Annexes

Annex A Strategic Partnership for Emotional and Mental Health (Children and Young People)

Abbreviations used in report and annex

AMHS	Adult Mental Health Services
CAMHS	Child and Adolescent Mental Health Services
CLA	Children Looked After
EWB	Emotional Wellbeing
LAT	Local Area Teams
MH	Mental Health
PCU	Partnership Commissioning Unit
SMTIM	Show Me That I Matter Panel
SDQ	Strengths and Difficulties Questionnaire
SEWG	Social Emotional Welfare Group
SPA	Single Point of Access
YOS	Youth Offending Service



Strategic Partnership for Emotional and Mental Health – [Children and Young People]

This page is intentionally left blank

Corporate Parenting Board – Workplan 2017-18

Meeting Date	Strategic Themes	Reports Supporting Strategic Theme	Other Reports
26 June 2017	Emotional Wellbeing & Mental Health; Wellbeing; Relationships & Identity	<ul style="list-style-type: none"> • Emotional wellbeing and mental health of children and young people in care, on the edge of care and care leavers 	
25 Sept 2017	Respect & Involvement	<ul style="list-style-type: none"> • Annual SMTIM Report • Annual Advocacy Report 	<ul style="list-style-type: none"> • Independent Reviewing Officer Annual Report • Member Visits to Children’s Homes • Updated terms of reference
20 Nov 2017	Moving to Adulthood	<ul style="list-style-type: none"> • Staying Put • Housing • Education, Training & Employment • Apprenticeships • Where young people live • Relevant performance data 	
12 Feb 2018			
16 April 2018			

This page is intentionally left blank